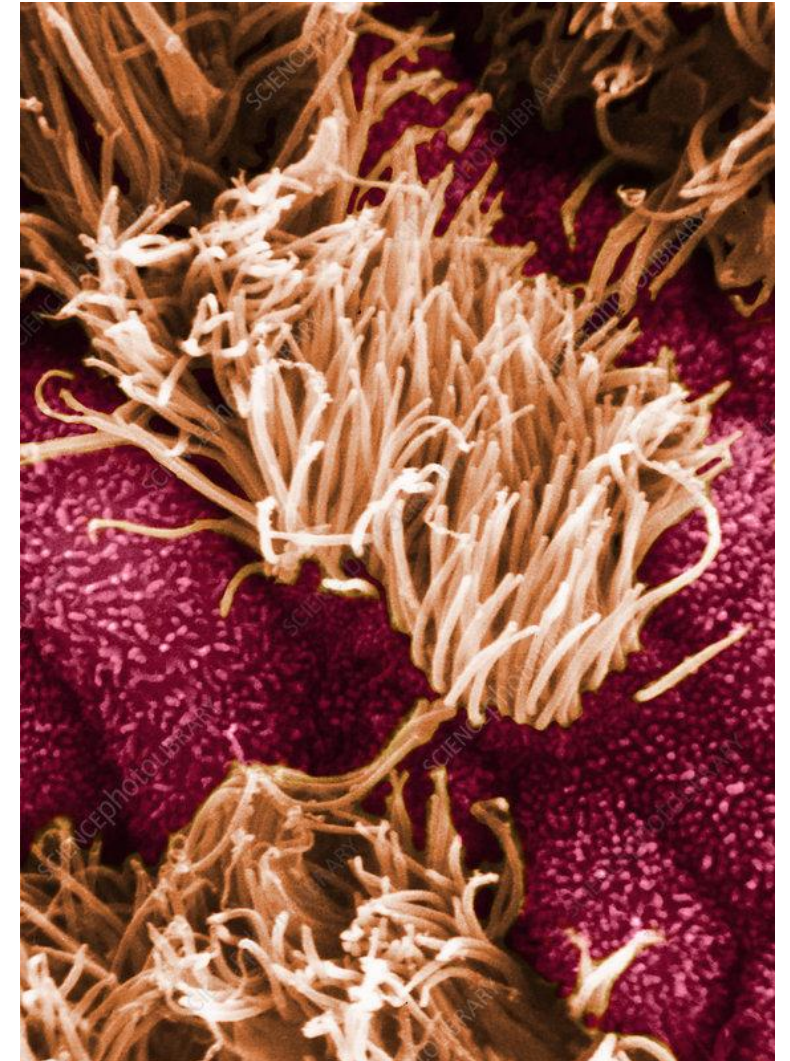
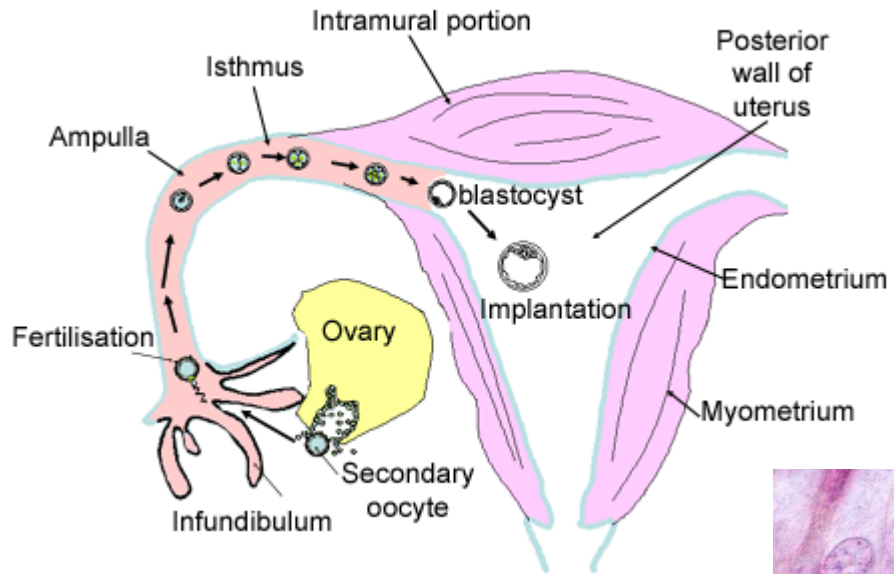
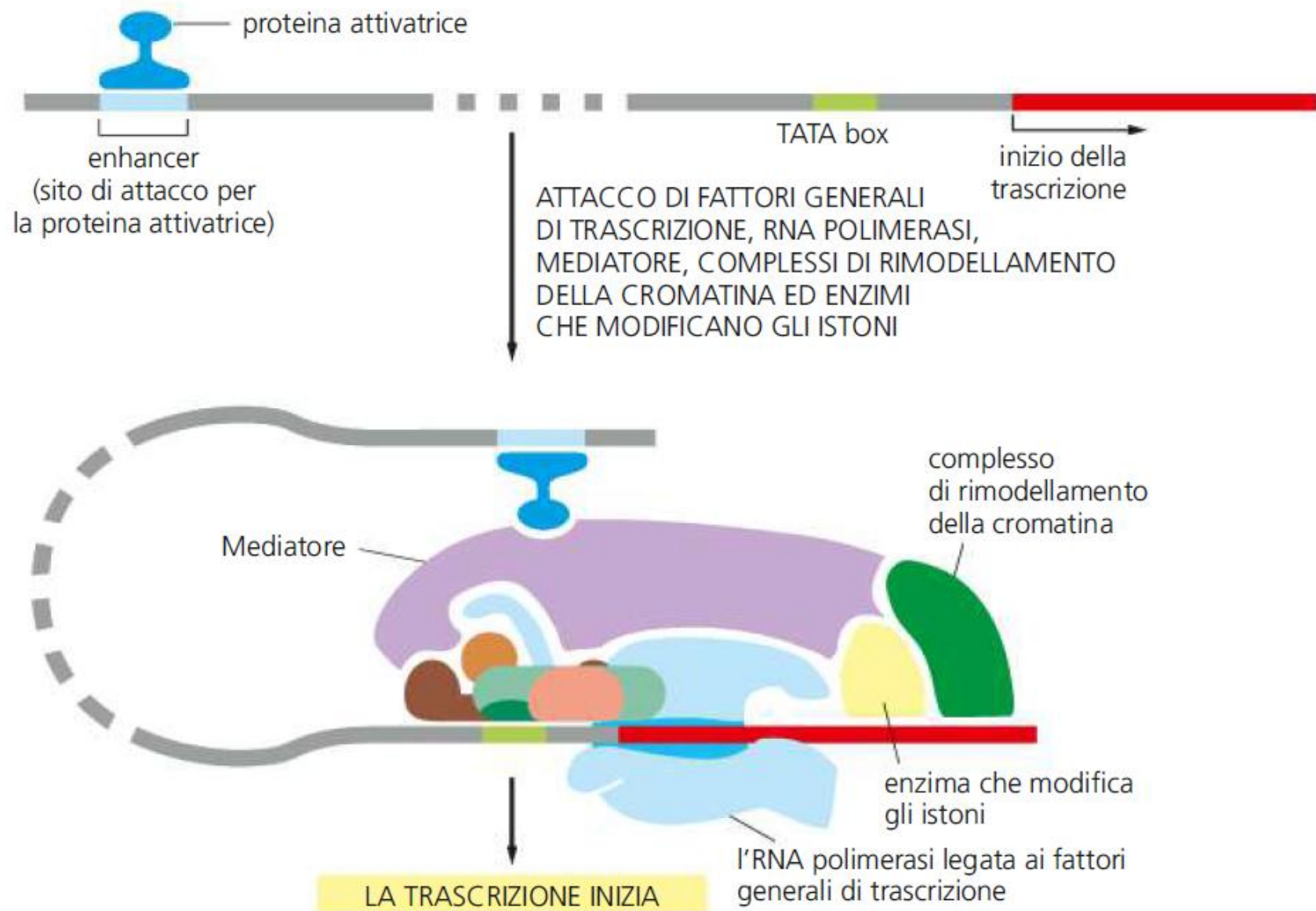


# Tessuto epiteliale

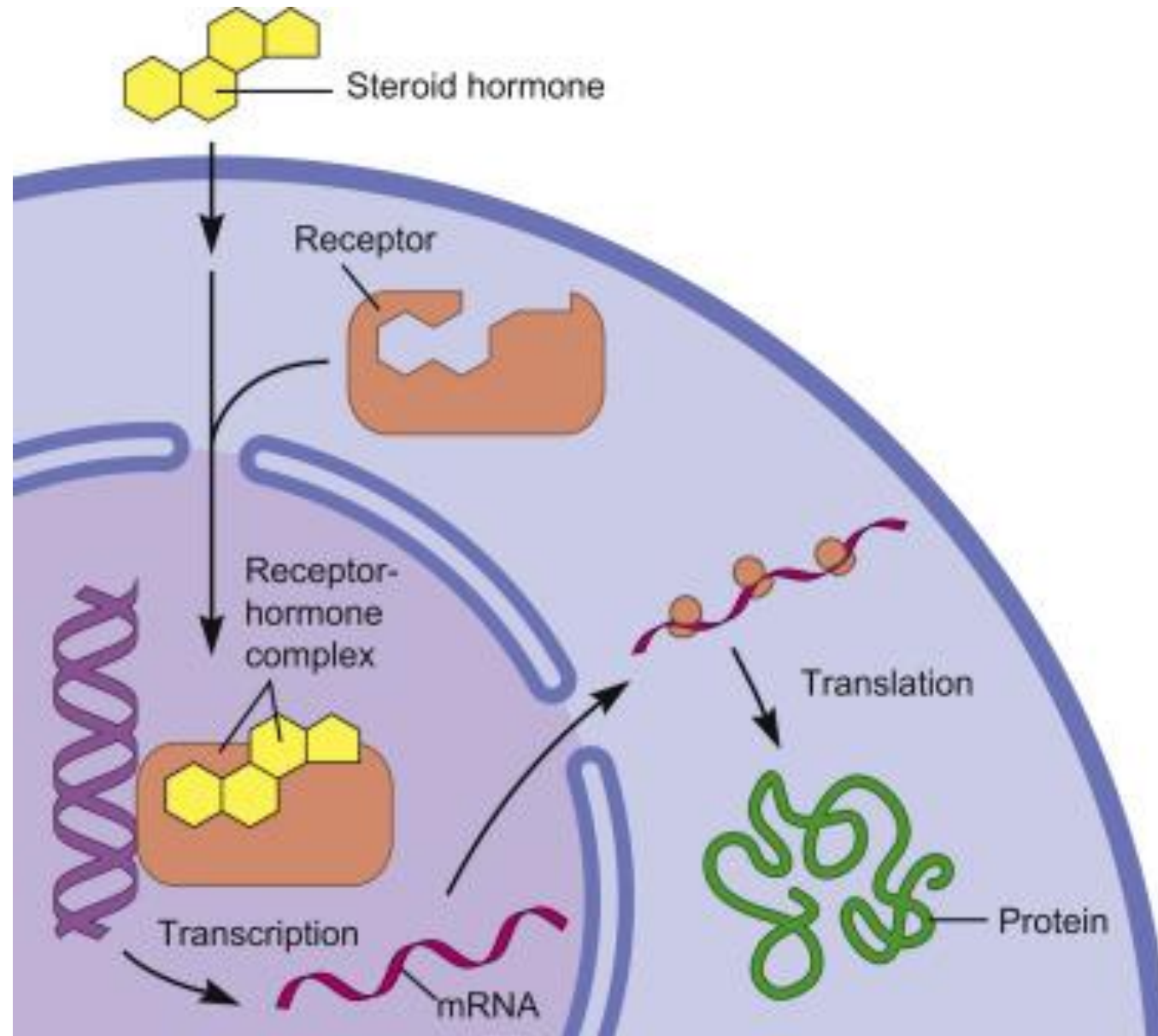
epitelio cilindrico semplice ciliato dell'ovidotto



# Fattori di trascrizione

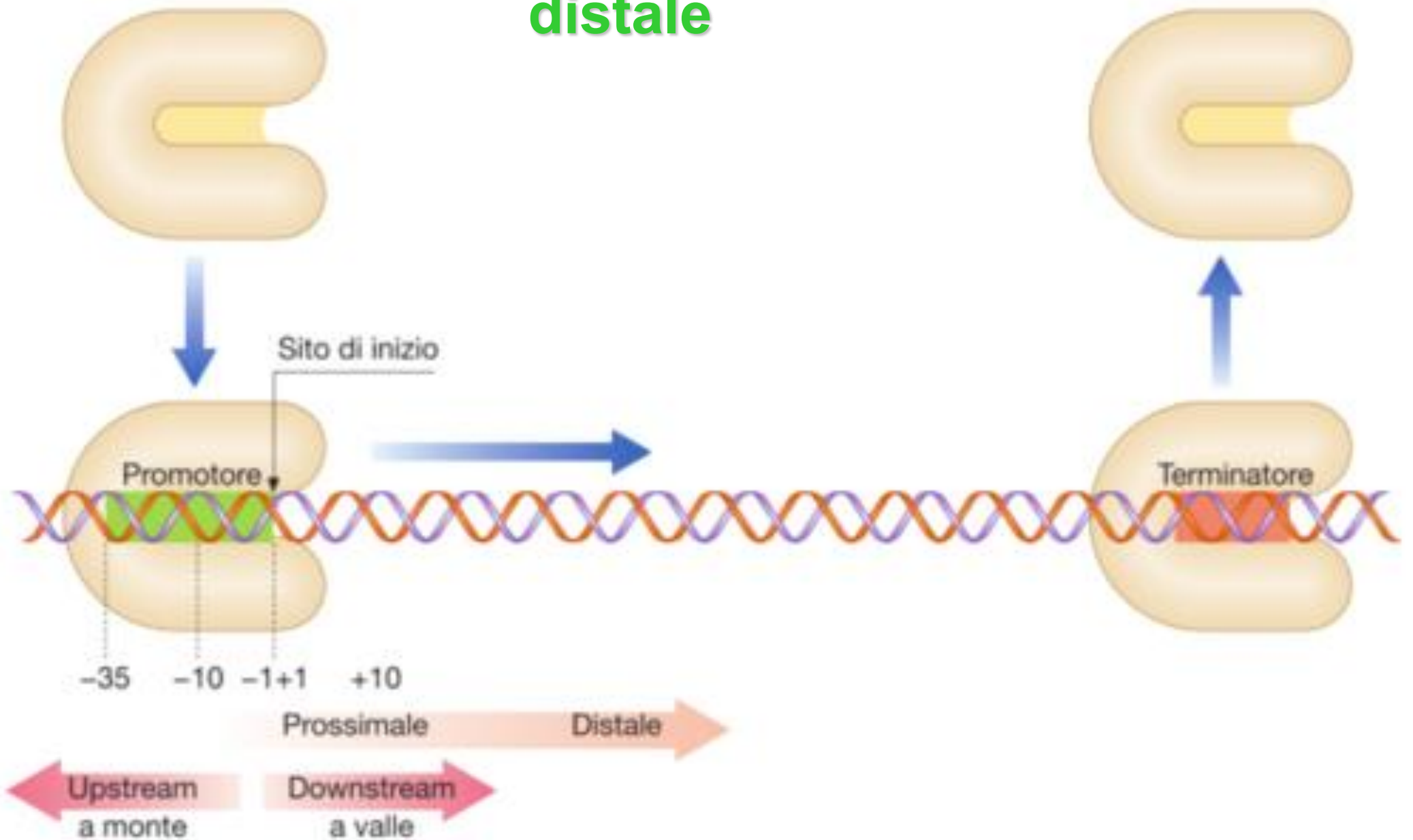


# Ormoni steroidei



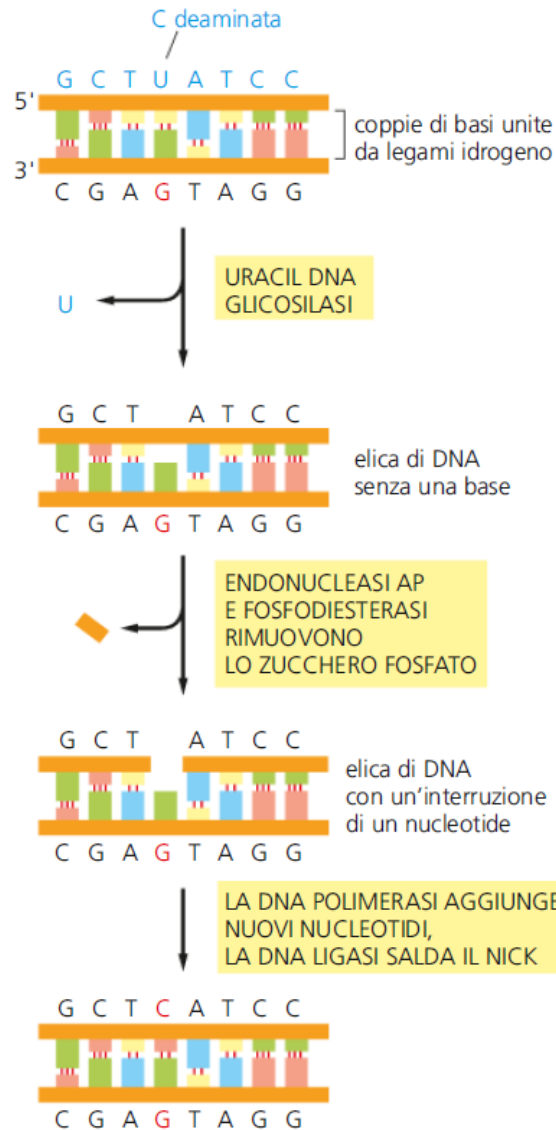


distale

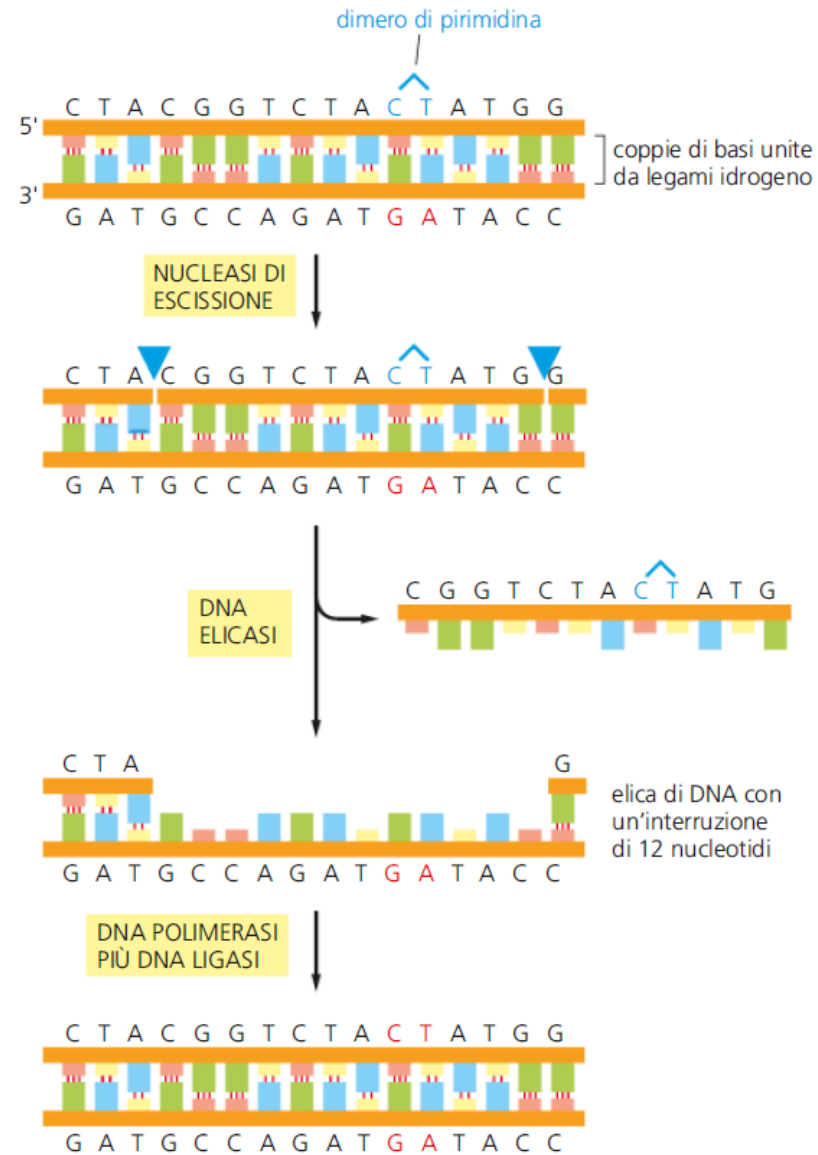


# escissione

(A) RIPARAZIONE PER ESCISSIONE DELLE BASI



(B) RIPARAZIONE PER ESCISSIONE DEI NUCLEOTIDI



# penetranza

- **Penetranza** = la probabilità che un genotipo si traduca effettivamente in un tratto fenotipico.
  - **Espressività** = il grado con cui un tratto fenotipico si manifesta in un individuo.

Penetranza incompleta (fenotipo associato al 60%)



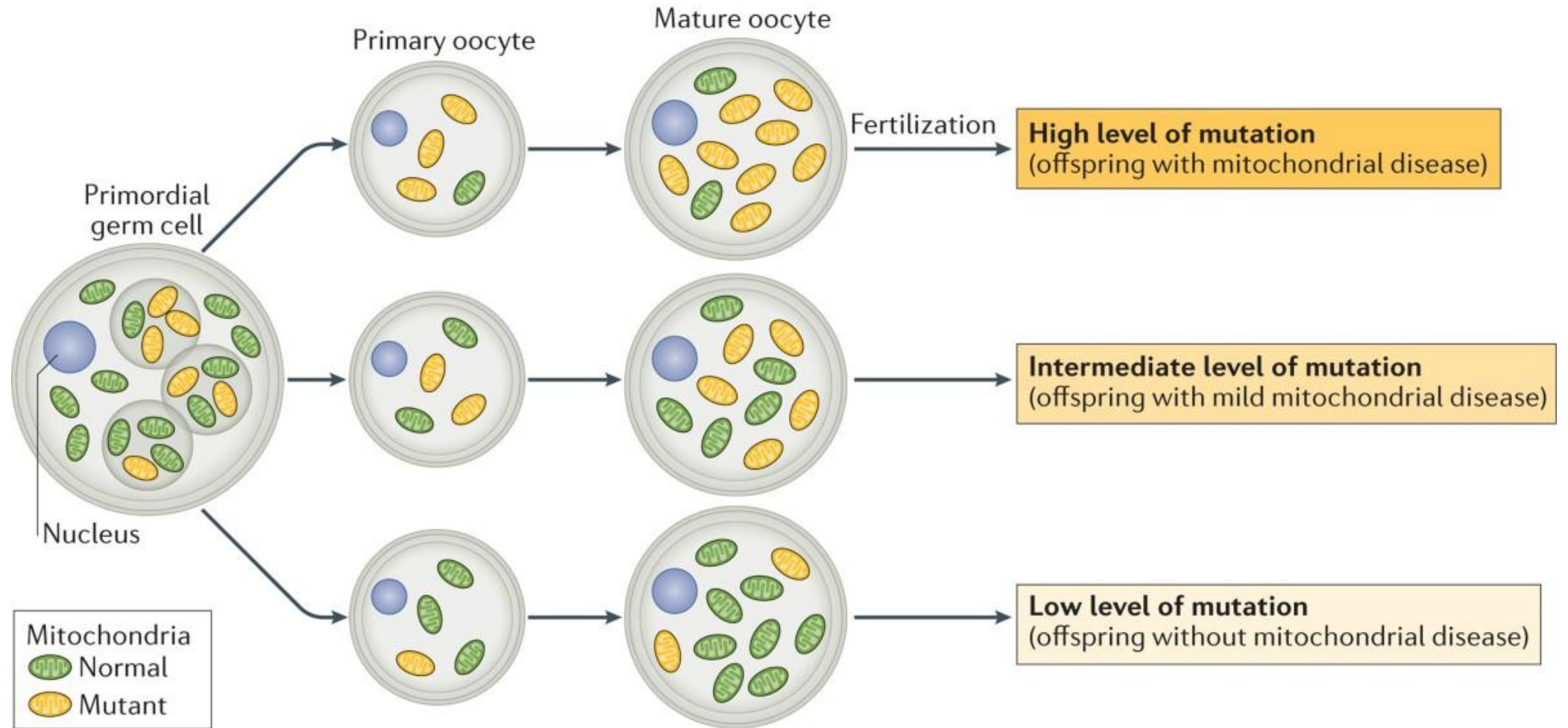
Espressività variabile (fenotipo associato al 100%)



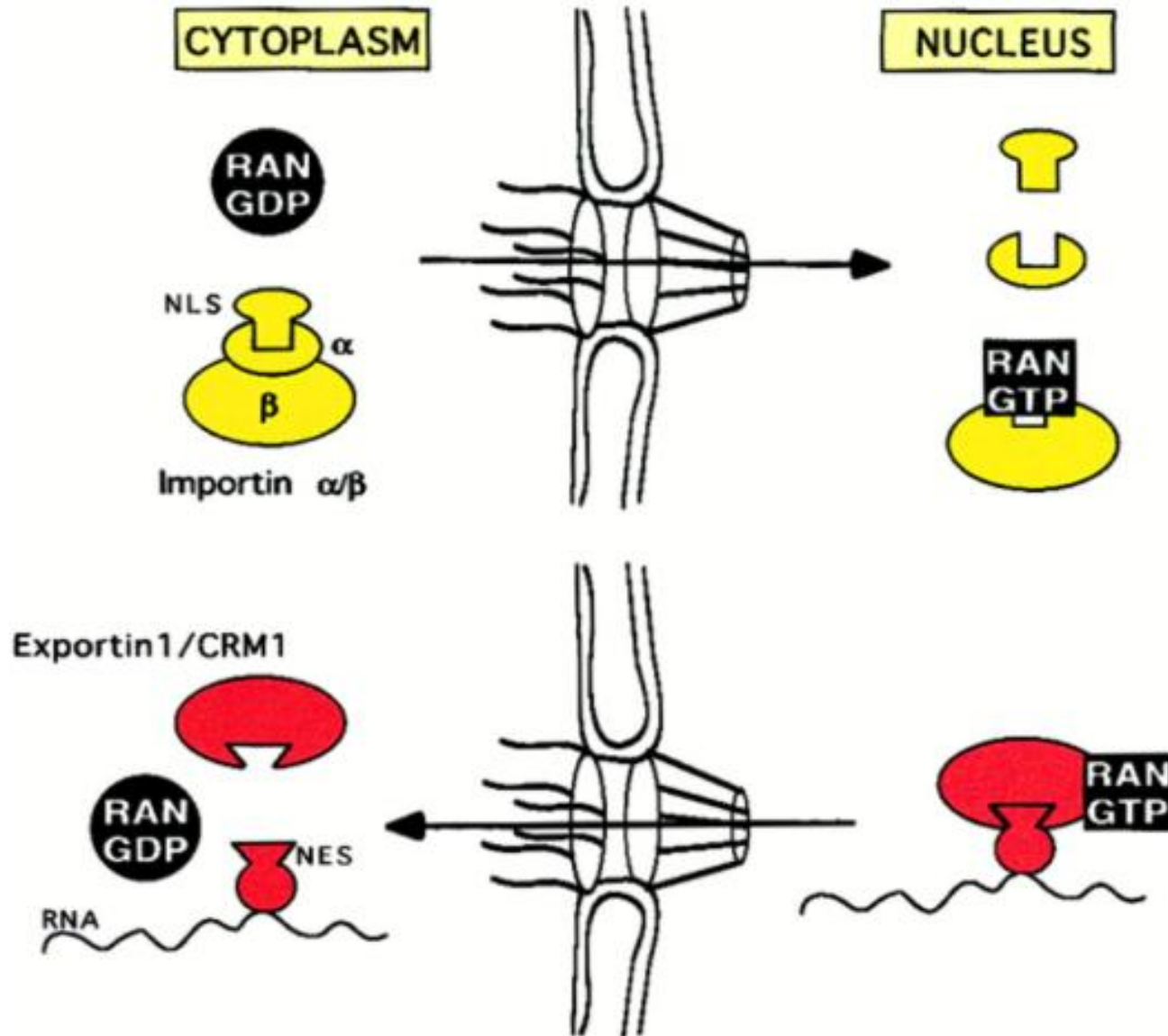
Penetranza incompleta ed espressività variabile



# penetranza

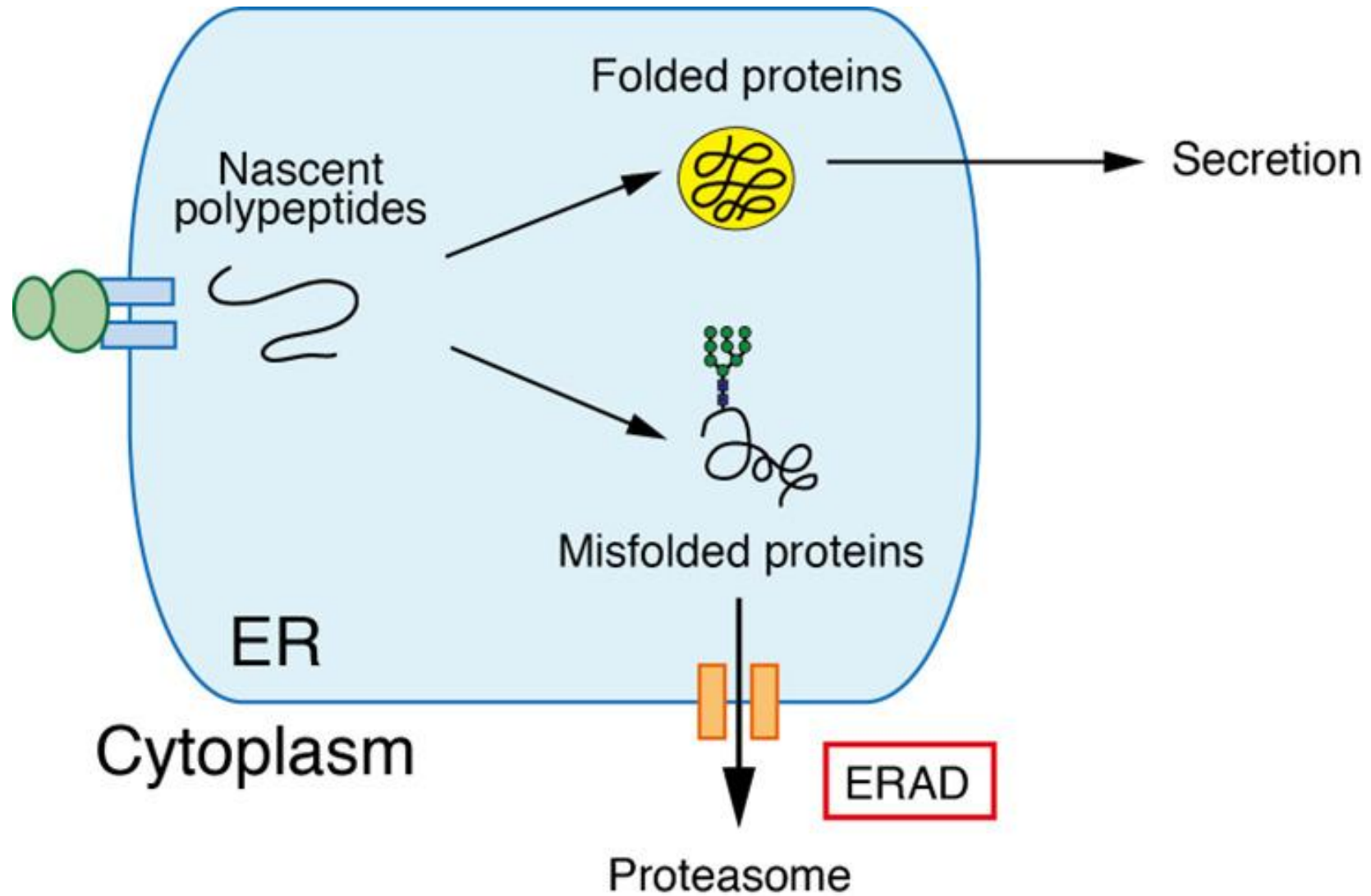


# importine

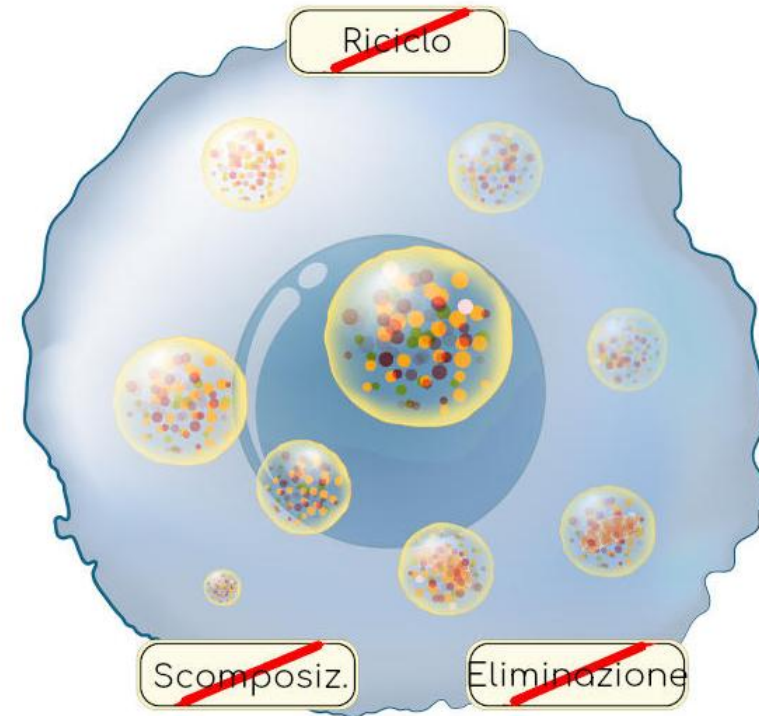
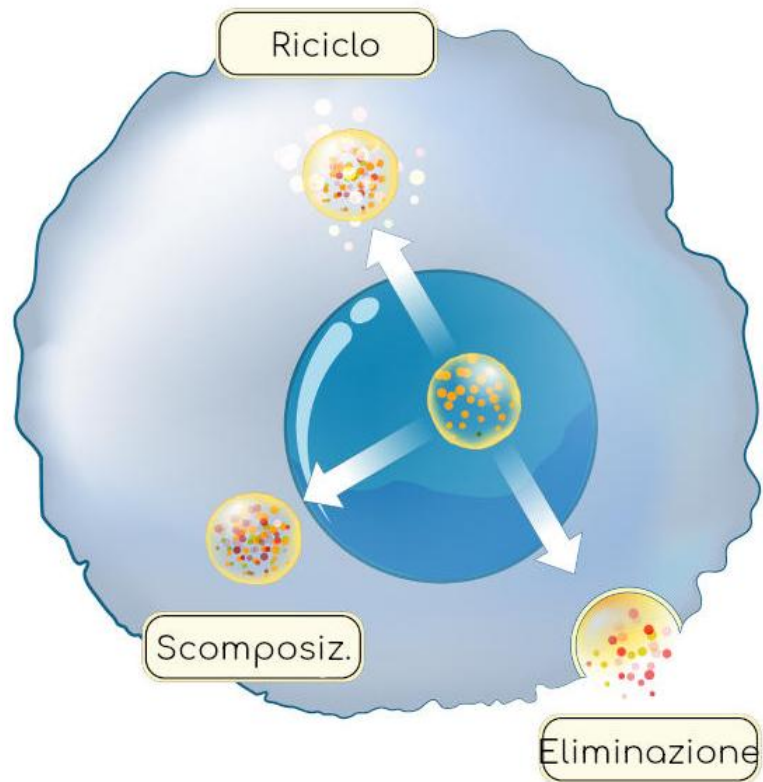




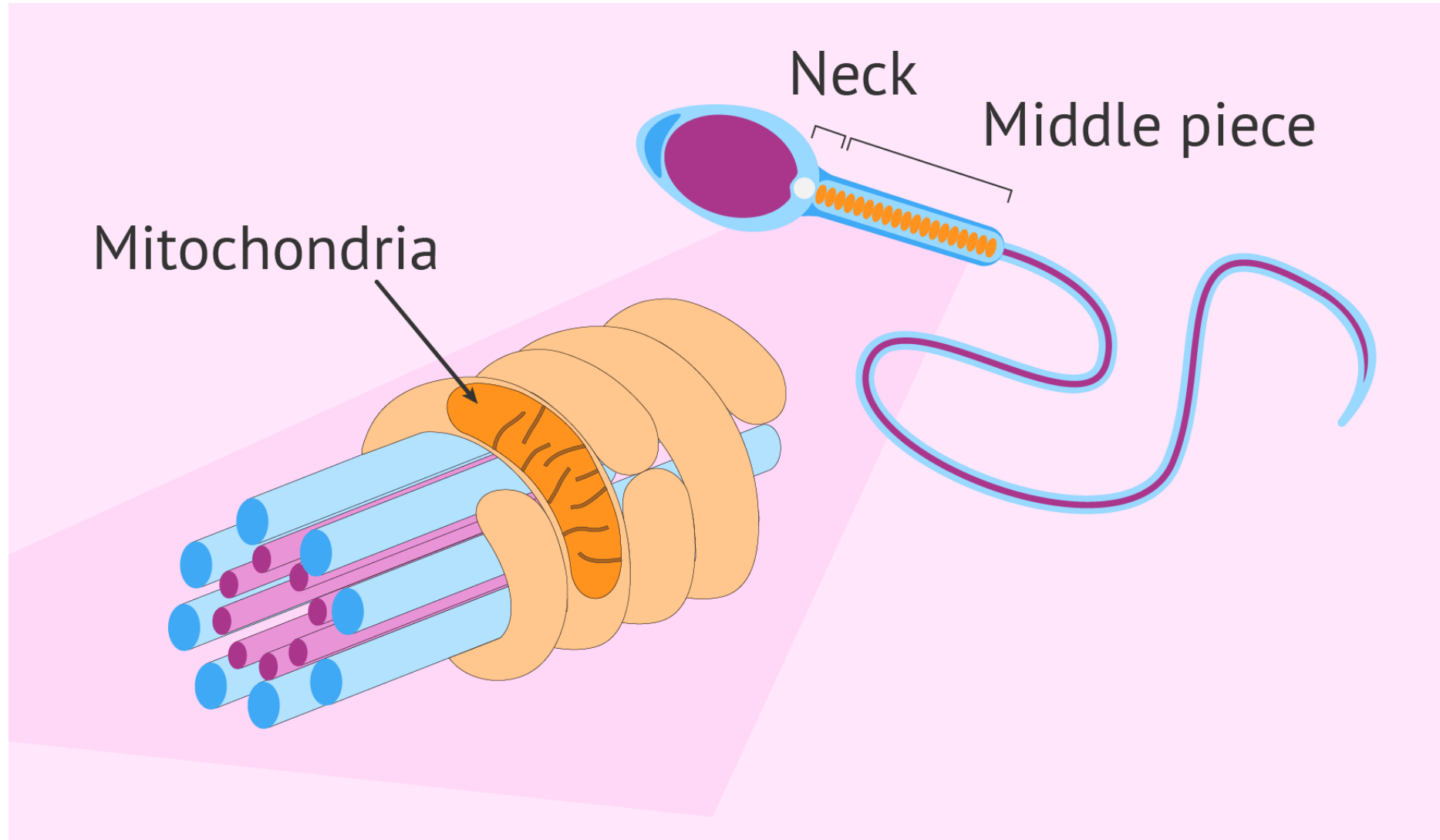
# ERAD



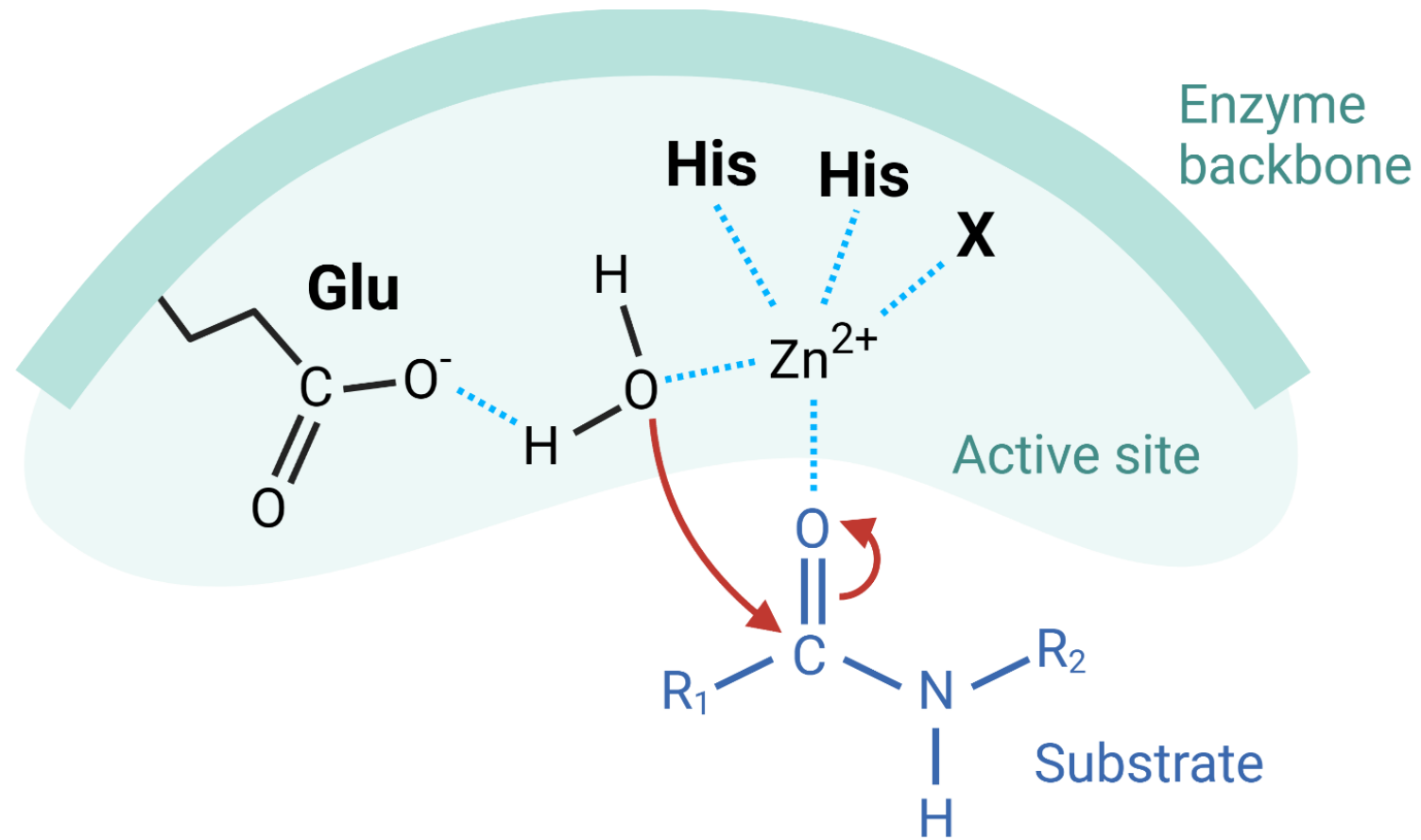
# accumulo



# flagello

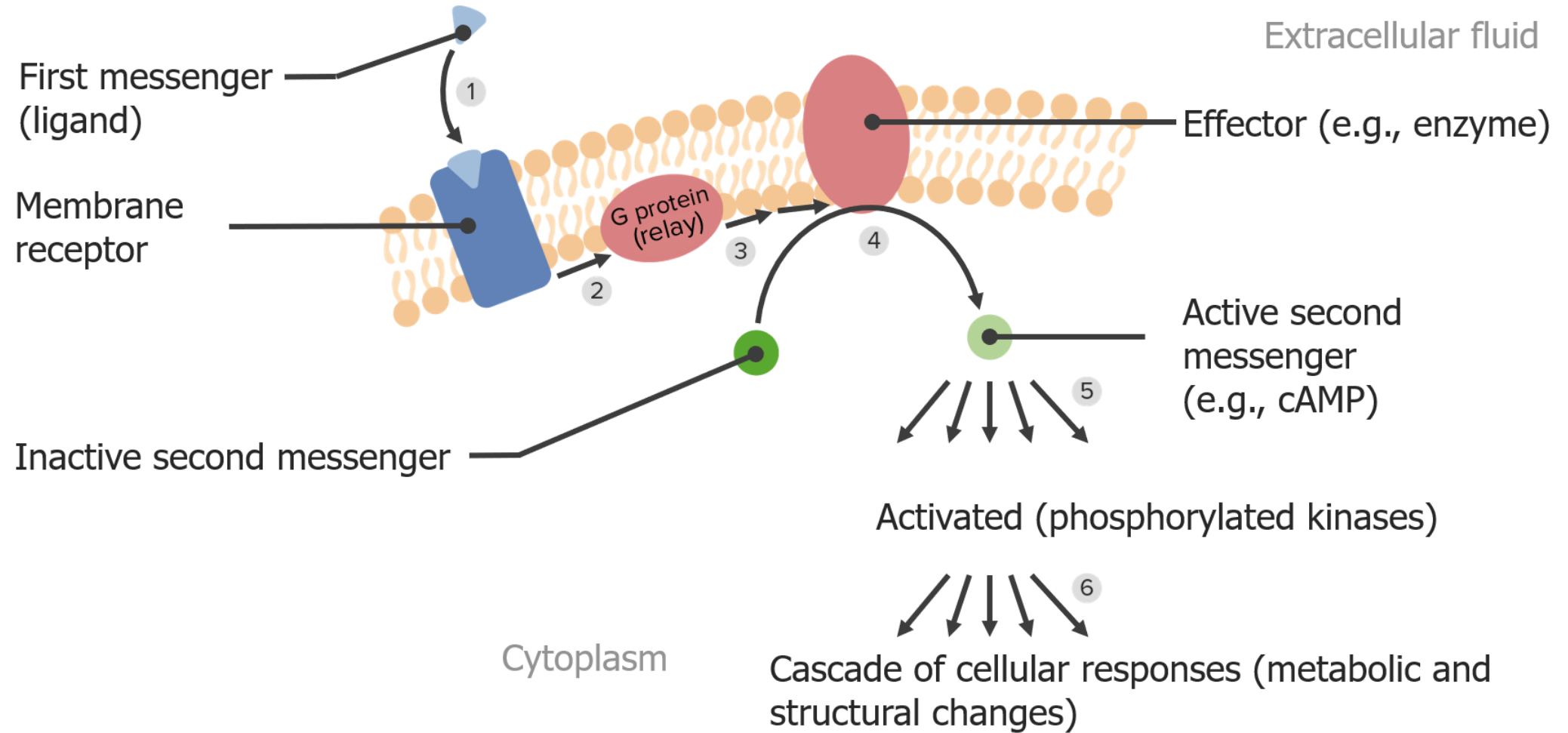


# metalloproteasi





## secondo



# securina

